

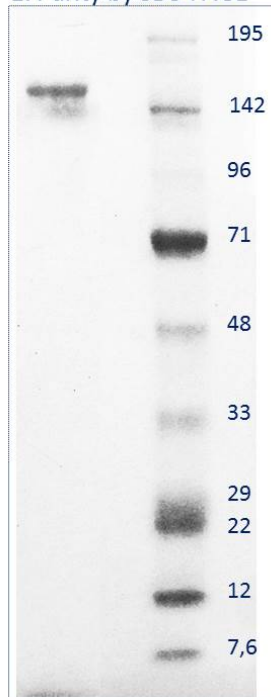
Product Datasheet

Anti-human Myoglobin chicken polyclonal antibody
SBA0201

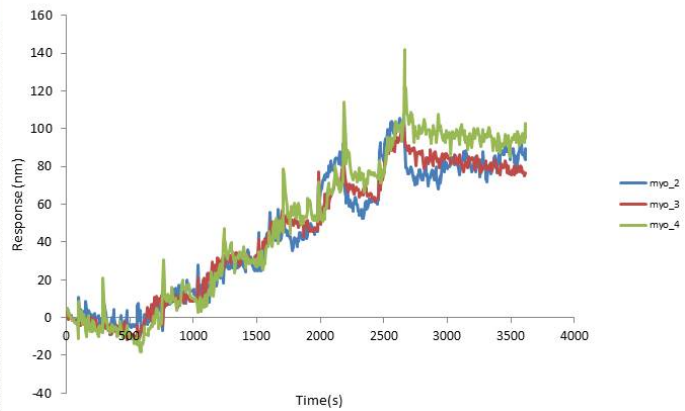
For research use only

Description:	Antigen affinity purified chicken polyclonal antibody to whole human Cardiac Myoglobin.
Tested application:	Tests positively in indirect ELISA assay towards Myoglobin antigen when discriminated against a negative serum control (fig. 3). Specificity and stability validated by SPR. Apparent kD value estimated to be within a low nM (nanomolar) range. Uniformity between different production batches confirmed by SPR (fig. 2).
Immunogen:	Whole human cardiac muscle Myoglobin Mw= 16.7-17.7 KDa
Form:	In PBS solution pH=7.4 supplied with 0.02% sodium azide (refer MSDS). Sterile filtered.
Concentration:	1 mg/mL (UV ₂₈₀)
Isotype:	IgY
Purification:	Affinity purification.
Purity:	≥95% pure for 1.5 µg tested and stained with Coomassie Brilliant Blue on 4-20% Bis-Tris polyacrylamide gel (see fig. 1).
Storage:	Store at 4°C short term. Longer term storage requires aliquoting and freezing at -20°C. Avoid freeze thaw cycles.

1. Purity by SDS-PAGE



2. Binding strength, stability and specificity analysis



Three different batches of the affinity purified IgY raised against human Myoglobin bind with almost identical kinetics to its antigen.

3. Relative titer of the anti-Myoglobin chicken polyclonal antibody. Starting concentration normalized to 1 µg/mL

