

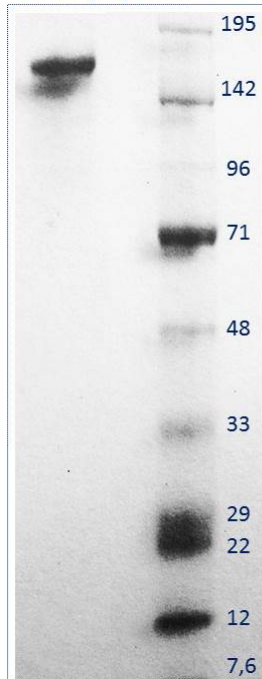
Product Datasheet

Anti-human Cystatin C chicken polyclonal antibody
SBA0205

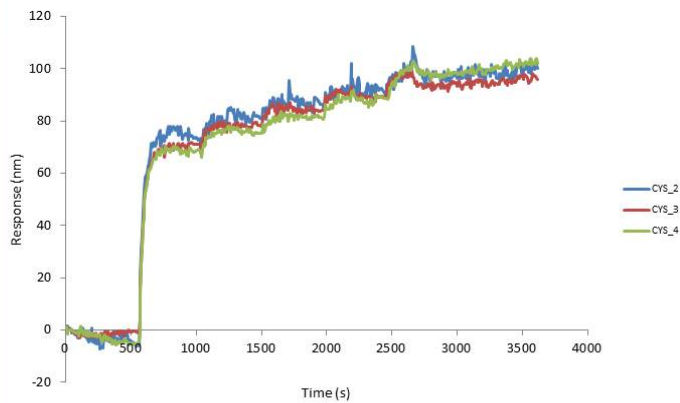
For research use only

Description:	Antigen affinity purified chicken polyclonal antibody to whole human Cystatin C protein.
Tested application:	Tests positively in indirect ELISA assay towards Cystatin C antigen when discriminated against a negative serum control (fig. 3). Specificity and stability validated by SPR. Apparent kD value estimated to be within a low nM (nanomolar) range. Uniformity between different production batches confirmed by SPR (fig. 2).
Immunogen:	Whole human Cystatin C protein Mw= 13 KDa
Form:	In PBS solution pH=7.4 supplied with 0.02% sodium azide (refer MSDS). Sterile filtered.
Concentration:	1 mg/mL (UV ₂₈₀)
Isotype:	IgY
Purification:	Affinity purification.
Purity:	≥95% pure for 1.5 µg tested and stained with Coomassie Brilliant Blue on 4-20% Bis-Tris polyacrylamide gel (see fig. 1).
Storage:	Store at 4°C short term. Longer term storage requires aliquoting and freezing at -20°C. Avoid freeze thaw cycles.

1. Purity by SDS-PAGE



2. Binding strength, stability and specificity analysis



Three different batches of the affinity purified IgY raised against human Cystatin C bind with almost identical kinetics to its antigen.

3. Relative titer of the anti-Cystatin C chicken polyclonal antibody. Starting concentration normalized to 1 µg/mL

