

## Product Datasheet

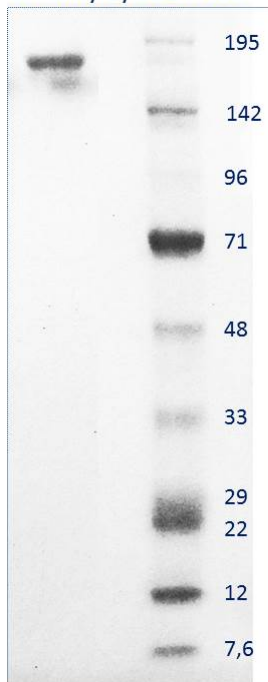
Anti-human C-reactive Protein chicken polyclonal antibody  
SBA0203

For research use only

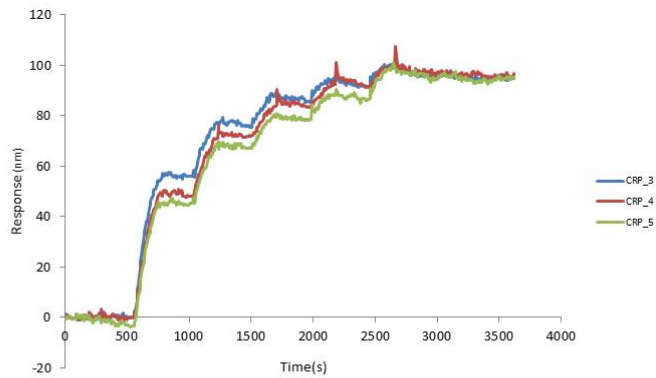
---

<b>Description:</b>	Antigen affinity purified chicken polyclonal antibody to whole human C-Reactive Protein.
<b>Tested application:</b>	Tests positively in indirect ELISA assay towards CRP antigen when discriminated against a negative serum control (fig. 3). Specificity and stability validated by SPR. Apparent kD value estimated to be within a low nM (nanomolar) range. Uniformity between different production batches confirmed by SPR (see fig. 2).
<b>Immunogen:</b>	Whole human C-Reactive Protein Mw= 23 KDa
<b>Form:</b>	In PBS solution pH=7.4 supplied with 0.02% sodium azide (refer MSDS). Sterile filtered.
<b>Concentration:</b>	1 mg/mL (UV <sub>280</sub> )
<b>Isotype:</b>	IgY
<b>Purification:</b>	Affinity purification.
<b>Purity:</b>	≥95% pure for 1.5 µg tested and stained with Coomassie Brilliant Blue on 4-20% Bis-Tris polyacrylamide gel (see fig. 1).
<b>Storage:</b>	Store at 4°C short term. Longer term storage requires aliquoting and freezing at -20°C. Avoid freeze thaw cycles.

1. Purity by SDS-PAGE



2. Binding strength, stability and specificity analysis



Three different batches of the affinity purified IgY raised against human C-reactive protein bind with almost identical kinetics to its antigen.

3. Relative titer of the anti-CRP chicken polyclonal antibody. Starting concentration normalized to 1 µg/mL

