

## Product Datasheet

Anti-Rabbit IgG chicken polyclonal antibody  
Affinity purified  
SBA0112S

For research use only

---

<b>Description:</b>	Antigen affinity purified chicken polyclonal antibody to whole Rabbit IgG.
<b>Tested application:</b>	Tests positively in indirect ELISA assay towards Rabbit IgG antigen when discriminated against a negative serum control (see fig. 2).
<b>Immunogen:</b>	Rabbit Immunoglobulin G
<b>Form:</b>	In PBS solution pH=7.4 supplied with 0.02% sodium azide (refer MSDS). Sterile filtered.
<b>Concentration:</b>	1 mg/mL (UV <sub>280</sub> )
<b>Isotype:</b>	IgY
<b>Purification:</b>	Affinity purification.
<b>Purity:</b>	≥95% pure for 1.5 µg tested and stained with Coomassie Brilliant Blue on 4-20% Bis-Tris polyacrylamide gel (see fig. 1).
<b>Storage:</b>	Store at 4°C short term. Longer term storage requires aliquoting and freezing at -20°C. Avoid freeze thaw cycles.

Fig.1.Purity by SDS-PAGE

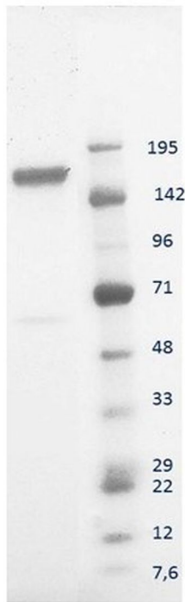


Fig.2.Relative ELISA titer

