

Product Datasheet

Anti-Goat IgG chicken polyclonal antibody
Affinity purified
SBA0111S

For research use only

Description:	Antigen affinity purified chicken polyclonal antibody to whole Goat IgG.
Tested application:	Tests positively in indirect ELISA assay towards Goat IgG antigen when discriminated against a negative serum control (see fig. 2).
Immunogen:	Goat Immunoglobulin G
Form:	In PBS solution pH=7.4 supplied with 0.02% sodium azide (refer MSDS). Sterile filtered.
Concentration:	1 mg/mL (UV ₂₈₀) .
Isotype:	IgY
Purification:	Affinity purification.
Purity:	≥95% pure for 1.5 µg tested and stained with Coomassie Brilliant Blue on 4-20% Bis-Tris polyacrylamide gel (see fig. 1).
Storage:	Store at 4°C short term. Longer term storage requires aliquoting and freezing at -20°C. Avoid freeze thaw cycles.

Fig 1. Purity by SDS-PAGE

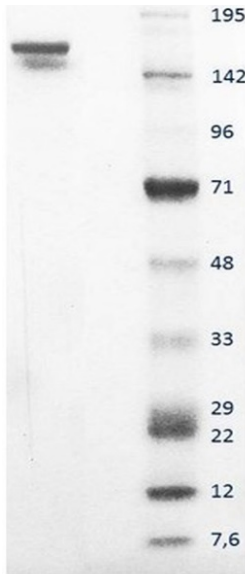


Fig 2. Relative ELISA titer

